



INFOMAPPER

Broadband Resources Information Sheet

Number 4

Web Site:	http://www.infomapper.com
Key Stages:	1, 2, 3, 4
Subjects:	All — particularly Humanities
Cost:	Primary £80, Secondary £240. Annual sub inc. 60% E2BN discount.

Key Features

InfoMapper is an online tool for working with large, high quality UK and world images, such as Ordnance Survey (OS) maps, aerial photography, global maps and satellite images.

InfoMapper can be used effectively in a range of ways to motivate your classes.

Base Maps

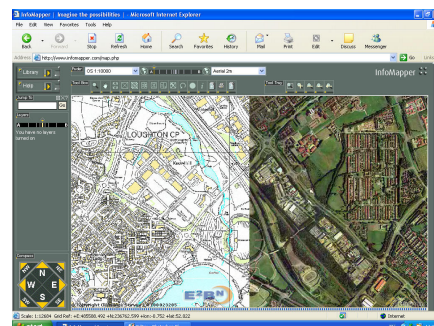
- UK base maps include Aerial 2 metre, OS 1:10,000 and OS 1:50,000. Other UK and world maps can also be used.
- Users can examine the maps in detail using techniques such as panning and zooming.
- Maps can be layered on top of one another, stitched together, or mirrored side by side.

Additional User-Created Layers

- Layers are transparent overlays superimposed over the base maps.
- Users can add clickable hotspots to their

layers to link shared digital learning resources (images, text, web-links etc) with specific places on the map.

- Once created, layers can be published and shared with schools throughout the country.



Comparison with Google Earth (GE)

- GE offers only aerial photography of varying quality. It is a commercial tool, focused mainly on the USA, but does offer coverage of the entire world.
- InfoMapper is exclusively for education. It is purpose built for children to create high quality resources and share them in a safe environment.
- It offers a greater variety of maps and photography, with consistent quality and layering, stitching and mirroring tools.

For further information contact:

Simon Chambers, Broadband Exploitation Officer
 Holne Chase Curriculum Centre
 t: 01908 657847
 e: simon.chambers@milton-keynes.gov.uk
 w: www.mkconnect.org.uk

